

Presentation on partnership working and data use in CYPSC

Colma Nic Lughadha
National Co-ordinator for CYPSC



**Working together
to improve the
lives of children,
young people
and families**

www.cypsc.ie

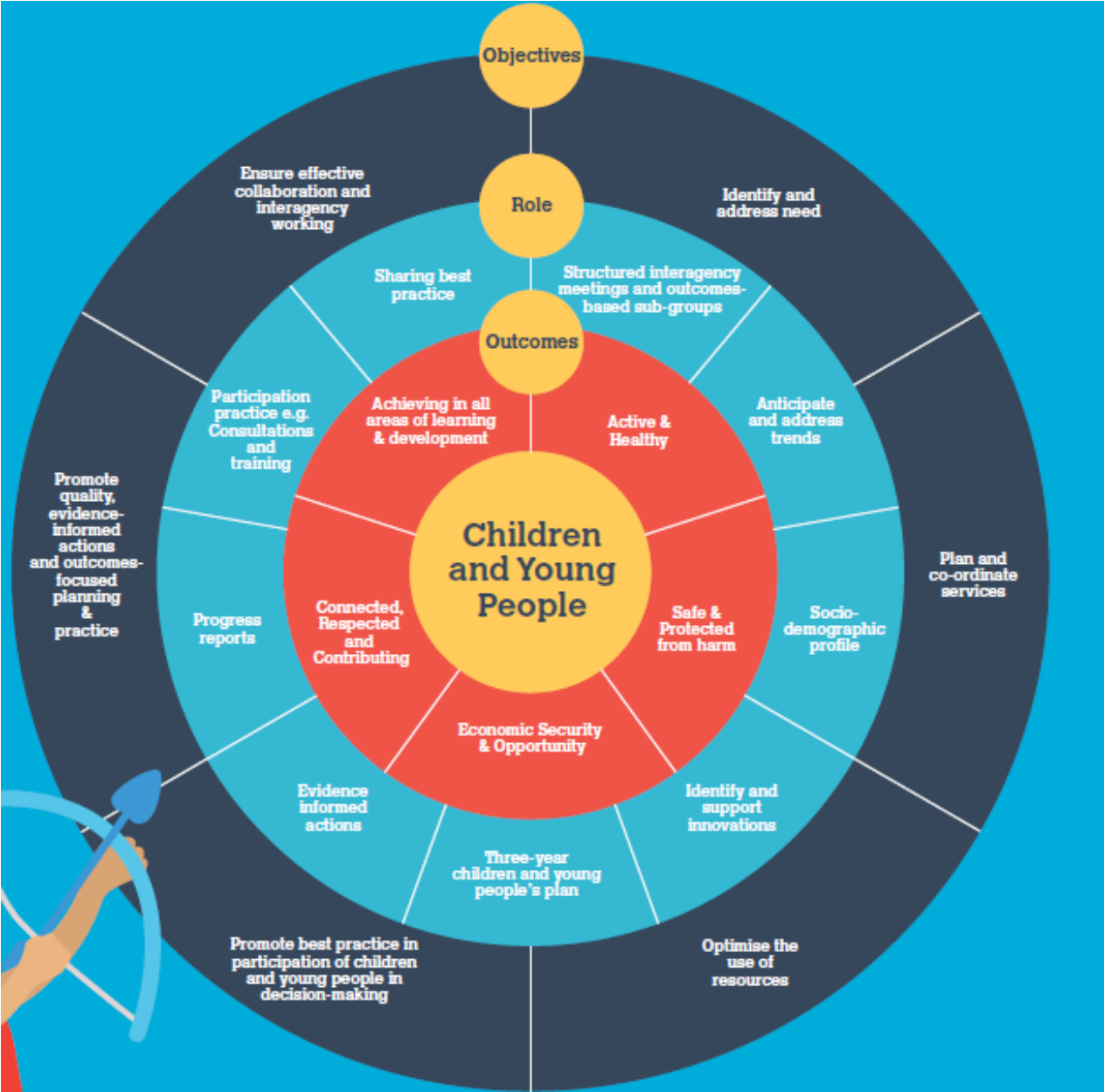


An Roinn Leanaí, Comhionannais,
Míchumais, Lámháiríochta agus Óige
Department of Children, Equality,
Disability, Integration and Youth

Contents

- The CYPSC Model of Interagency Working
- Interagency Engagement in CYPSC
- CYPSC Planning and Reporting
- Children and Young People's Plan
 - Local Needs Analysis
 - Action Planning

CYPSC National Model of Interagency Working



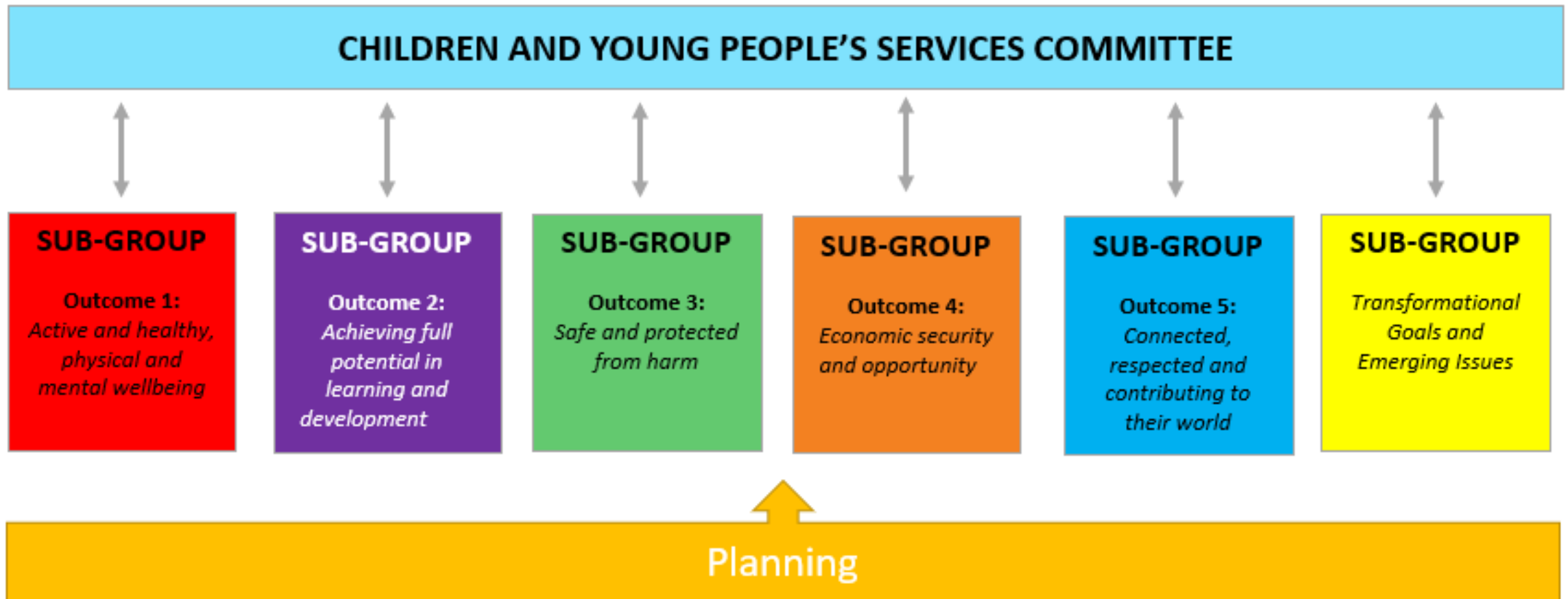
(DCYA, 2019)



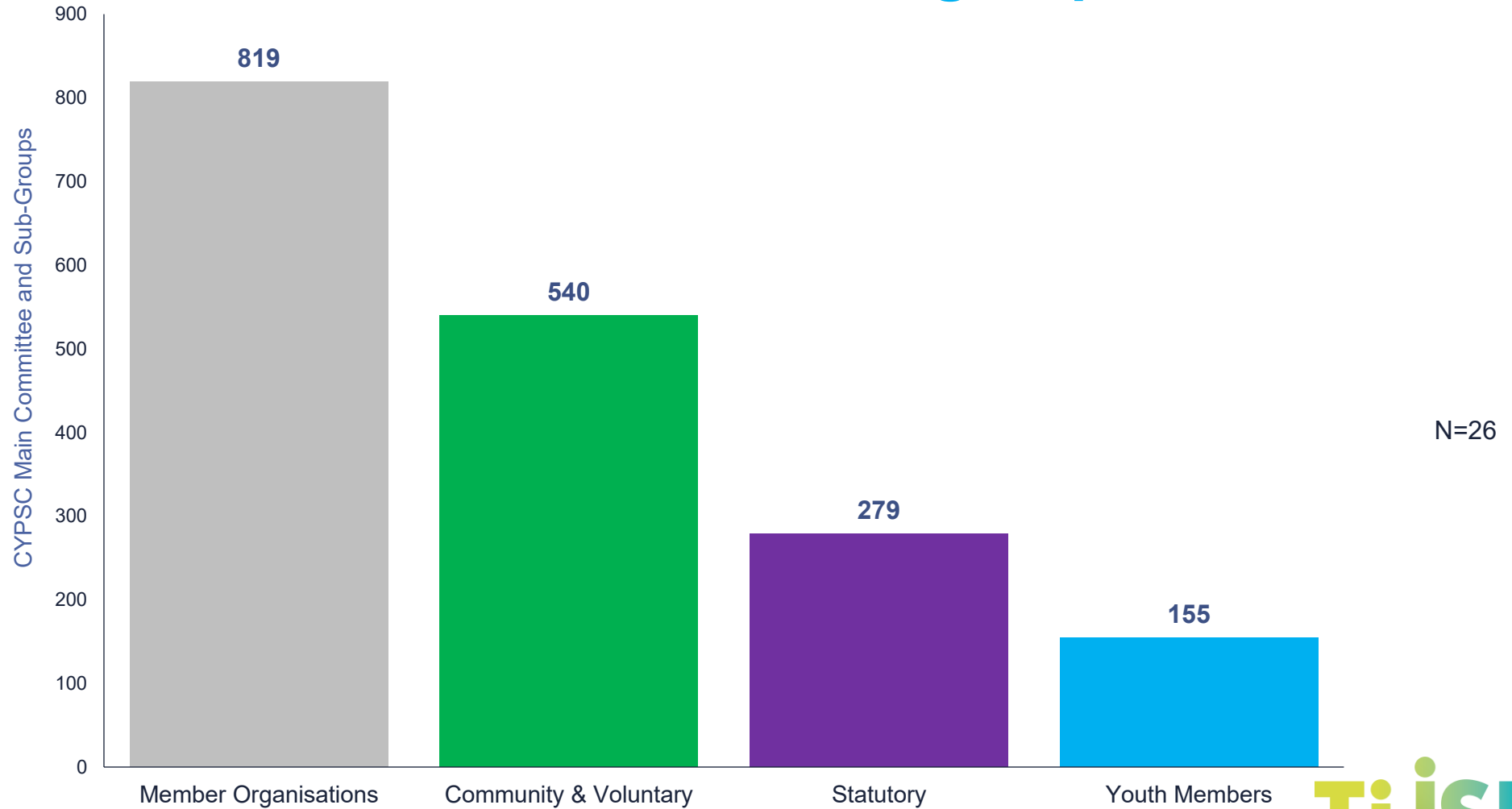
CYPSC National Model of Interagency Working



CYPSC National Model of Interagency Working



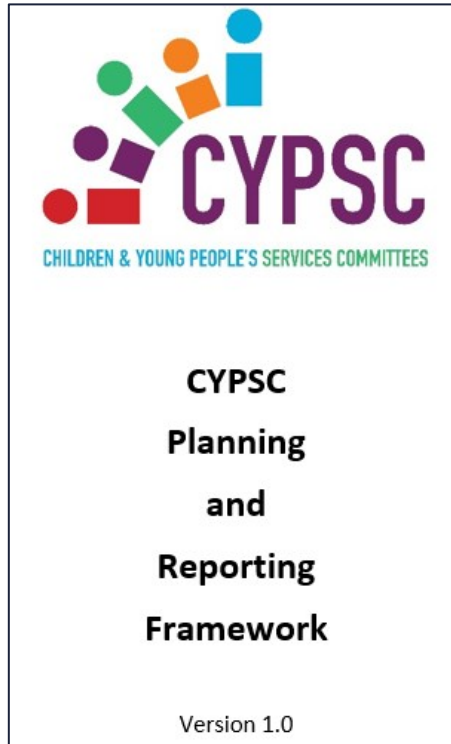
Inter-agency Engagement: CYPSC Main Committee and CYPSC Sub-group Members 2023



Interagency Engagement: CYPSC Main Committee and CYPSC Subgroup Members National Totals from 2019 to 2023

	2019	2020	2021	2022	2023	Sparkline
Organisations	774	765	786	797	852	
Statutory organisations	294	288	275	236	285	
Community & Voluntary organisations	480	477	511	561	567	
Youth Members	48	54	161	122	155	

Principles of CYPSC Planning and Reporting



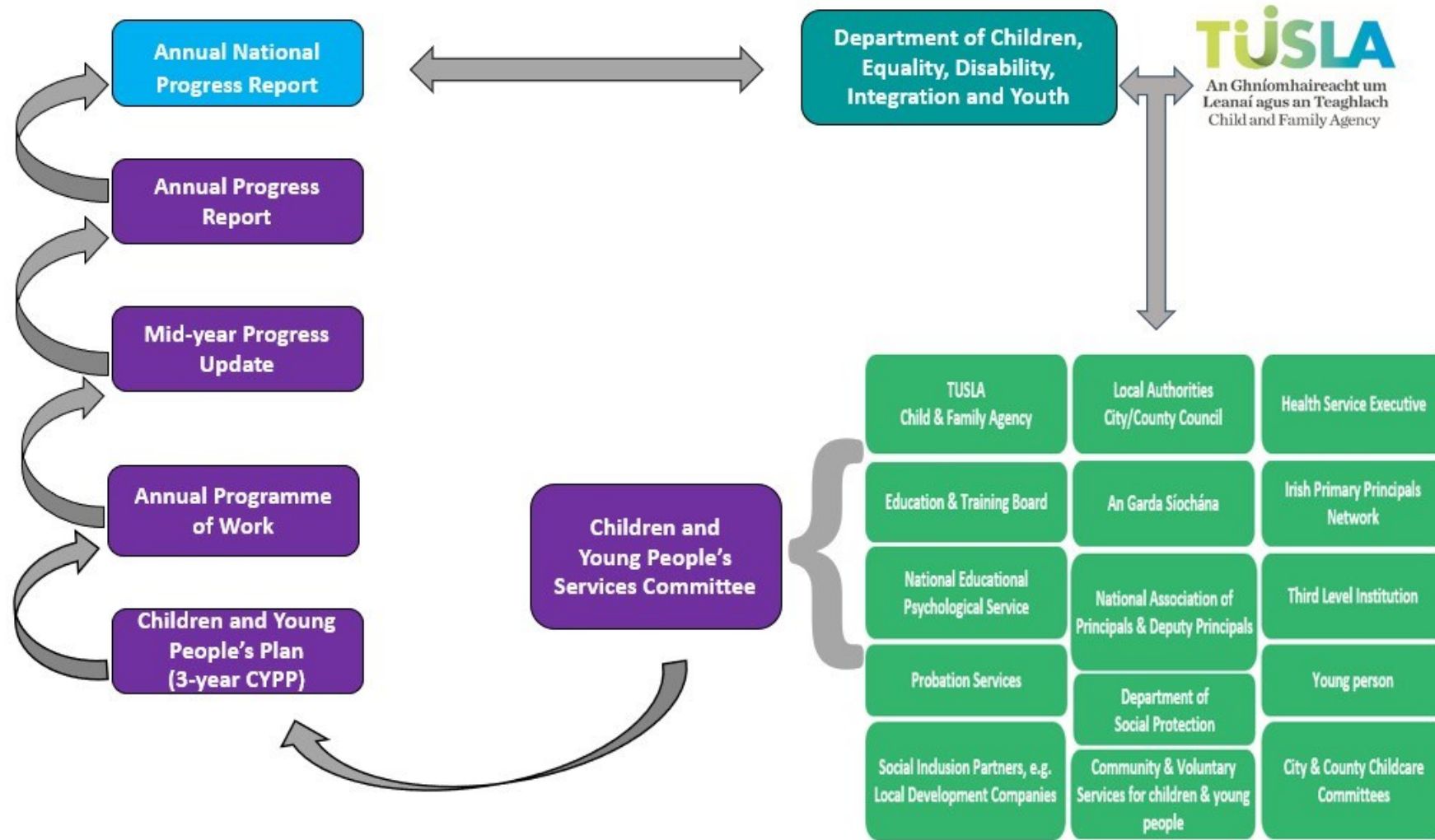
- Evidence-informed: That CYPSC puts the best available evidence at the heart of planning and reporting processes.
- Outcomes based: CYPSC planning is outcomes based i.e. its purpose is to achieve agreed outcomes.
- Mutual accountability: CYPSC members hold themselves and others accountable to the common agenda as expressed in national policy and in local plans.
- Data supported decision-making: CYPSC are committed to collecting and using data to make informed decisions.
- Learning: CYPSC stakeholders at local and national level are open to learning through reflection on how well the work has lived up to performance expectation.
- Communication: Regular and open communications will flow - bottom up, top down and across the CYPSC initiative.



Evidence-informed planning



CYPSC Planning and Reporting



Children and Young People's Plan

- Each Committee develops and implements an interagency 3-year Children and Young People's Plan for the County (CYPP), which is:
- Designed to improve outcomes for children and young people in their area
- The CYPP includes:
 - **Socio-demographic profile** – how are our children and youth doing?

 - **Audit of Services** – what services are available in the county?

 - **Consultation** – what do children and young people think?

 - **Needs Analysis** – what does this information tell us about need in our county?

 - **Prioritisation** – what can we prioritise to work on together?

 - **Action Plan** – what are we committing to do together?

 - **Review and Monitoring** – how will we know we did it/did it work?

CYPSC Children and Young People's Plan; Local Needs Analysis

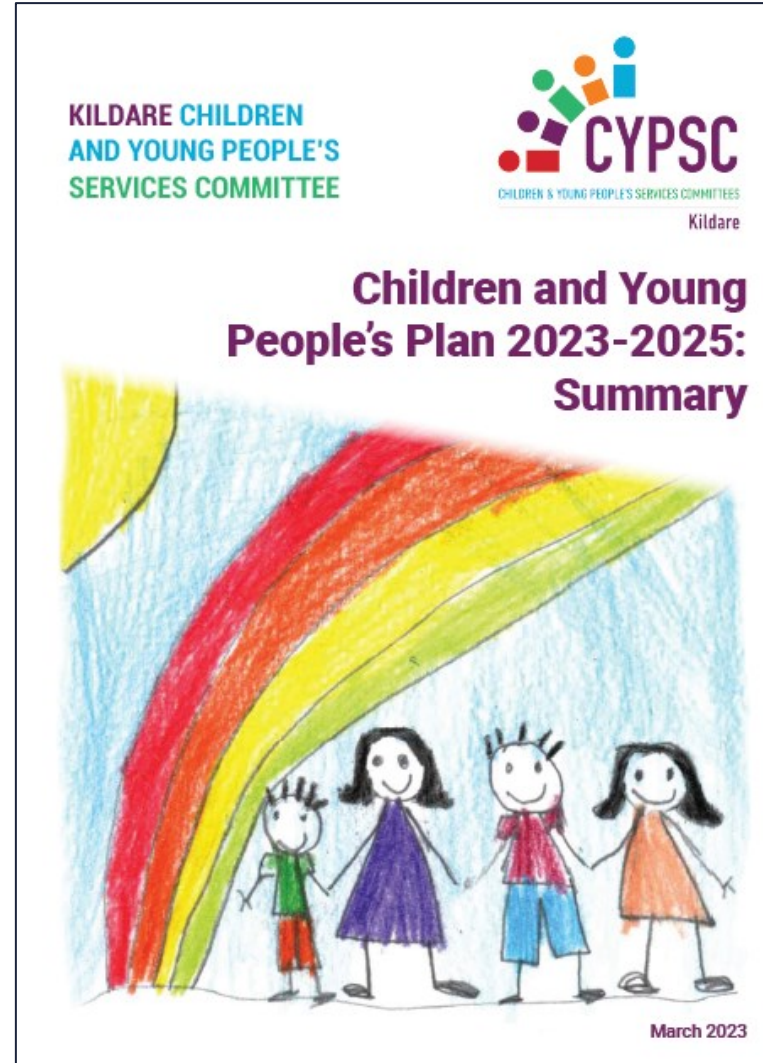
Reflective questions: When conducting the local needs analysis for the CYPSC area, the CYPSC should reflect on the following questions:

1. What are the strengths in terms of services, facilities, resources and supports in the CYPSC area?
2. Are services designed to focus on the achievement of particular outcomes in line with the five national outcomes for children and young people?
3. How can we measure if the service is achieving its outcomes? What indicators / measures would provide evidence of this?
4. Are there any obvious gaps in local services preventing outcomes from being achieved?
5. Are services fully inclusive of the voice and perspectives of the children, young people and families who utilise them?
6. Has the CYPSC approached consultation with children and young people informed by Lundy's Model of Participation?

Has the CYPSC considered (separately) the needs of children, young people and families in specific circumstances, including for example: infants; pre-school children; school age children; adolescents; children with disabilities; parents (mothers, fathers, foster parents, parents in challenging circumstances); grandparents and other family carers; Travellers, non-Irish national children and young people.

Has the information been collected in a systematic manner, and does it provide a robust, representative picture of the needs of children, young people and families in the area?

CYPSC Children and Young People's Plan; Local Needs Analysis



CYPSC Children and Young People's Plan; Action Plan

Reflective Questions: When identifying the objectives, indicators and activities for each priority area, the CYPSC should reflect on the following questions:

1. What do we know about 'what works' in relation to each priority area? If there are gaps in our knowledge about 'what works', have we thought about how to fill the gaps?
2. What evidence informed practices could inform our work in relation to the priority areas?
3. What evidence informed programmes could inform our work in relation to the priority areas?
4. How does this plan build on what is already being done in the area? Are there existing strengths that we can replicate or scale up?
5. Are we doing anything for which we do not have convincing evidence of its effectiveness?
6. Are we making the best use of the resources we have at our disposal?
7. How could we improve interagency working in our county?
8. Will this plan address the identified needs of children and young people?
9. Are our objectives SMART? Specific, Measurable, Achievable/Actionable, Realistic and Time bound?
10. Following implementation how will we know if our Action Plan has made a difference? How will we know if anything has changed?


CYPSC Children and Young People's Plan; Action Plan

Action Plan for **Insert County** Children and Young People's Services Committee

Outcome 3: Safe and protected from harm

Priority Area <i>(To be identified based on the local needs analysis.)</i>	Objective(s) <i>(A brief statement of what the CYPSC wants to accomplish in relation to each priority area. The objective(s) should be measurable.)</i>	Indicators <i>(The measure which will be used to determine whether the objective is being achieved. Can be a national indicator or one that has been developed locally.)</i>	Target	Activities <i>(The activities that the CYPSC will undertake to deliver on its objectives.)</i>	Timeframe for completion	Lead Responsibility and partners	Link to other plans <i>(e.g. documents from Government, state agencies, or local organisations)</i>	Linked to other national outcome(s) and or Transformational Goal(s)
Examples								
<i>Child pedestrian injuries</i>	<i>Reduction in the number of child pedestrians injured on our roads</i>	<i>Percentage decrease in the number of child pedestrians injured on our roads</i>	<i>X% reduction in the number of child pedestrians injured on our roads</i>	<i>Increase number of speed ramps Increase number of pedestrian crossings Reduce speed limits</i>	<i>February 2024</i>	<i>Local Authority Partners: <u>An Garda Síochána</u></i>	<i>X County Local Economic and Community Plan, National Road Safety Authority Strategic Plan,</i>	<i>Transformational Goals: Earlier Intervention and Prevention</i>

CYPSC Children and Young People's Plan; Action Plan



CYPSC
CHILDREN & YOUNG PEOPLE'S SERVICES COMMITTEES
Roscommon

Roscommon
Children & Young People's Services Committee

Children and Young People's Plan
2022- 2024

TÚSLA
An Ghníomhaireacht um
Leanaí agus an Teaghlach
Child and Family Agency

CYPSC
CHILDREN & YOUNG PEOPLE'S SERVICES COMMITTEES



CYPSC
CHILDREN & YOUNG PEOPLE'S SERVICES COMMITTEES
Sligo Leitrim

Supporting & Disabilities / Additional Needs

Mental & Physical Health

Child / Youth Participation

LGBT

Keeney Family Safe

Transport

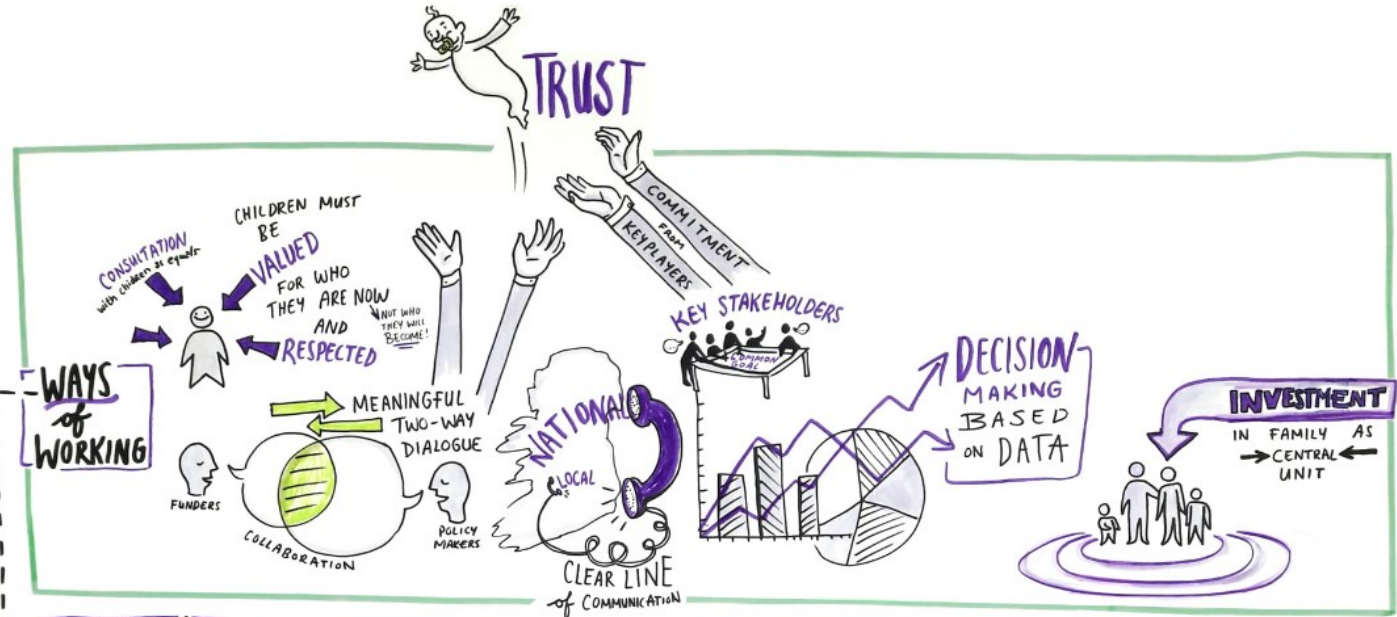
Education

SLIGO LEITRIM
CHILDREN AND YOUNG PEOPLE'S PLAN
2024- 2026

Reported priority needs of children and young people from 2019 to 2023

	2019	2020	2021	2022	2023
Priority Need 1	Mental health (13)	Mental health (15)	Mental health (18)	Mental health (13)	Mental health (15)
Priority Need 2	Disability inclusion and services (5)	Vulnerable families due to Covid 19 (7)	Education supports (6)	New communities (10)	Disability inclusion and services (8)
Priority Need 3	Education supports (5)	Education supports (4)	Disability inclusion and services (5)	Disability inclusion and services (6)	New communities (8)
Priority Need 4	Homelessness (5)	Digital poverty (4)	Domestic violence (4)	Parental support (4)	Parental support (3)
Priority Need 5	Parental support (4)	Disability inclusion and services (3)	Parental support (3)	School avoidance (2)	School avoidance (3)

A fully-functioning child and youth-friendly COUNTY / CYPSC AREA



For queries contact:
Colma Nic Lughadha
National Co-ordinator for Children and Young
People's Services Committees

087 2220935

Colma.NicLughadha@tusla.ie

cypsc@tusla.ie

www.cypsc.ie



TUSLA

An Ghníomhaireacht um
Leanaí agus an Teaghlach
Child and Family Agency